

# 84 series round edge cases

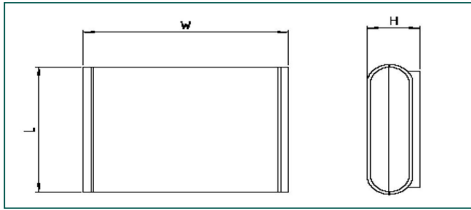
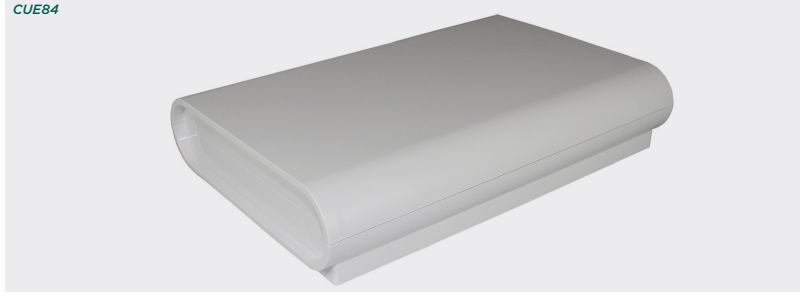
**TAKACHI**

## Product overview

ABS round shaped case, suitable for wall mounting, home energy systems and home automation.

- Snap-fit enclosures - no screws required
- Surface mount knockout option
- Available in two sizes
- Internal pillars for PCB mounting
- Applications in home energy, home automation and control units
- 84 series has been designed to meet the requirements of IP40

CUE84



### SPECIFICATION

Materials	ABS as standard UL94-HB
Operating temperature	-10°C to +60°C
Standard colours	White
Protection class	84 series has been designed to meet the requirements of IP40
Standard unit includes	Base and lid

CB WHITE	LENGTH	WIDTH	HEIGHT
CDT8401WH	110mm	140mm	35mm
CDT8402WH	125mm	180mm	35mm

## KEY FEATURES

Snap-fit enclosure | Available in two sizes | Wall mounting

